



Exploration Done Differently

Finding Nevada's Next **GOLD** Discovery

August 17, 2020

Corporate Deck

TSX-V: RDG



CAUTIONARY STATEMENT

Disclaimer

Readers should not rely on information in this summary for any purpose other than for gaining general knowledge of Ridgeline Minerals Corporation ("Ridgeline", or the "Company"). This summary may include forward-looking statements as well as historical information. Forward-looking statements include, but are not limited to, the advancement of mineral exploration, development and operating programs. The words "potential," "anticipate," "significant," "forecast," "believe," "estimate," "expect," "may," "project," "plan" and similar expressions are intended to be among the statements that identify forward-looking statements. Although Ridgeline believes that its expectations as reflected in any forward-looking statements, are reasonable, such statements involve risks and uncertainties and no assurance can be given that actual results will be consistent with these forward-looking statements. The information contained in this summary was current at the date of publication. Ridgeline does not warrant or make any representations as to the ongoing accuracy of this information, the validity or completeness of any facts or information contained in this summary. Ridgeline may revise this information in subsequent publications but does not assume the obligation to update any information. Ridgeline shall not be liable or responsible for any claim or damage, direct or indirect, special or consequential, incurred by the reader arising out of the interpretation, reliance upon or other use of the information contained in this summary. This information is not intended to be and should not be construed in any way as part of an offering or solicitation of securities. No securities commission or other regulatory authority in Canada, the United States or any other country or jurisdiction has in any way passed upon the information contained in this summary.

Qualified Persons. Michael Harp, P.Geo., Vice President, Exploration, is the Qualified Person as defined by National Instrument 43-101 and has reviewed and approved the technical data in this presentation.

Footnotes

(1) Adjacent Properties. This presentation contains information about adjacent properties on which Ridgeline Minerals does not have the right to explore or mine. Investors are cautioned that mineralization on adjacent properties is not necessarily indicative of mineralization that may be hosted on the Company's properties.

(2) Readers are cautioned that the exploration targets at the Carlin-East, Swift, and Selena properties are early-stage exploration prospects and conceptual in nature. There has been insufficient exploration to define a mineral resource and it is uncertain if further exploration will result in the target being delineated as a mineral resource.

(3) Historical information contained in this presentation, maps or figures regarding the Company's project or adjacent properties cannot be relied upon as the Company's QP, as defined under NI 43-101 has not prepared nor verified the historical information.

(4) Source: Fraser Institute Annual Survey of Mining Companies 2018. Investment Attractiveness Index weights both policy perception (taxation levels, onerous regulations, quality of infrastructure, etc.) and mineral potential (40% / 60%) of 83 countries and provinces/states

(5) Ridgeline's option to purchase 100% fully satisfied upon closing of IPO

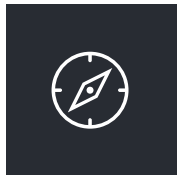
(6) Source: 91 rock chip samples taken in the general Juniper target area in 2020 with values ranging from min = 0.001 ppm Au, mean = 0.466 ppm Au, max = 16.5 ppm Au



ABOUT US

Why Invest in Ridgeline Minerals

Ridgeline is a Nevada focused Gold explorer with a 116 km² exploration portfolio across three projects in the Carlin and Battle Mountain – Eureka Trends



LOCATION

Nevada - top ranked mining jurisdiction in the world ⁽⁴⁾



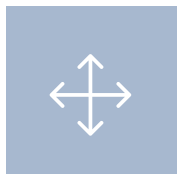
DRILLING EXPERTISE

Industry leading drill services
= greater access = more drilling
= higher potential for discovery



EXPERIENCED GOLD EXPLORERS

Decades of experience finding numerous multi-million ounce gold deposits in Nevada



SIZE

One of the largest land packages (116 km²) in Nevada controlled by a junior exploration company



CATALYST-RICH ACTIVITY

5,750 meter drill program planned for 2020 across all three projects



SHAREHOLDER FRIENDLY STRUCTURE

Management owns 17% and is fully aligned with shareholders

(4) Source: Fraser Institute Annual Survey of Mining Companies 2018. Investment Attractiveness Index weights both policy perception (taxation levels, onerous regulations, quality of infrastructure, etc.) and mineral potential (40% / 60%) of 83 countries and provinces/states.

Our Team

Chad Peters, P. Geo. President, CEO & Director

- Co-Founded Ridgeline Minerals in 2018
- 10+ years exploration & production experience in Canada and the US
- Led discovery of the multi-million ounce CSD Gap deposit with Premier Gold

Duane Lo, CPA, CA, CFO & Director

- 20+ years international accounting & financial management experience
- Previously CFO of Mason Resources & Luna Gold (now Equinox Gold), Controller at First Quantum

Mike Harp, P. Geo., Vice President, Exploration

- Qualified Person as defined by National Instrument 43-101
- 10+ years exploration experience in Nevada
- Led discovery of multi-million ounce North Dark Star deposit with Gold Standard Ventures

Terese Gieselman, Corporate Secretary

- 30+ years experience in corporate financial reporting and compliance
- Founder & President of Minco Corp. Management Inc.

Lewis Teal, P. Geo., Independent Director

- 35 years global exploration experience
- Previously Newmont Group Executive, South American Exploration
- Team Lead, Newmont Carlin Trend Exploration Group - discovered 20 + Moz. Au

Mike Blady, B.Sc. Geology Independent Director

- President, CEO & Director of Golden Ridge Resources
- 10+ years as senior management of numerous resources companies

Geoff Chater, B.Sc. Geology Strategic Advisor

- 30+ years mineral exploration experience across four continents
- Capital markets consultant to multiple publicly traded companies
- Former director of Nevsun Resources, Reservoir Minerals and Valley High Ventures

Steve Neilsen, Technical Advisor

- Ridgeline Minerals Co-Founder & President of Envirotech Drilling LLC
- 40 years of drilling & mining operations support services in Nevada



ALIGNED WITH SHAREHOLDERS

Corporate Structure

Post-IPO (as at August 13, 2020)



Working Capital C\$ 1.6M
(as at June 30, 2020)



17% Management

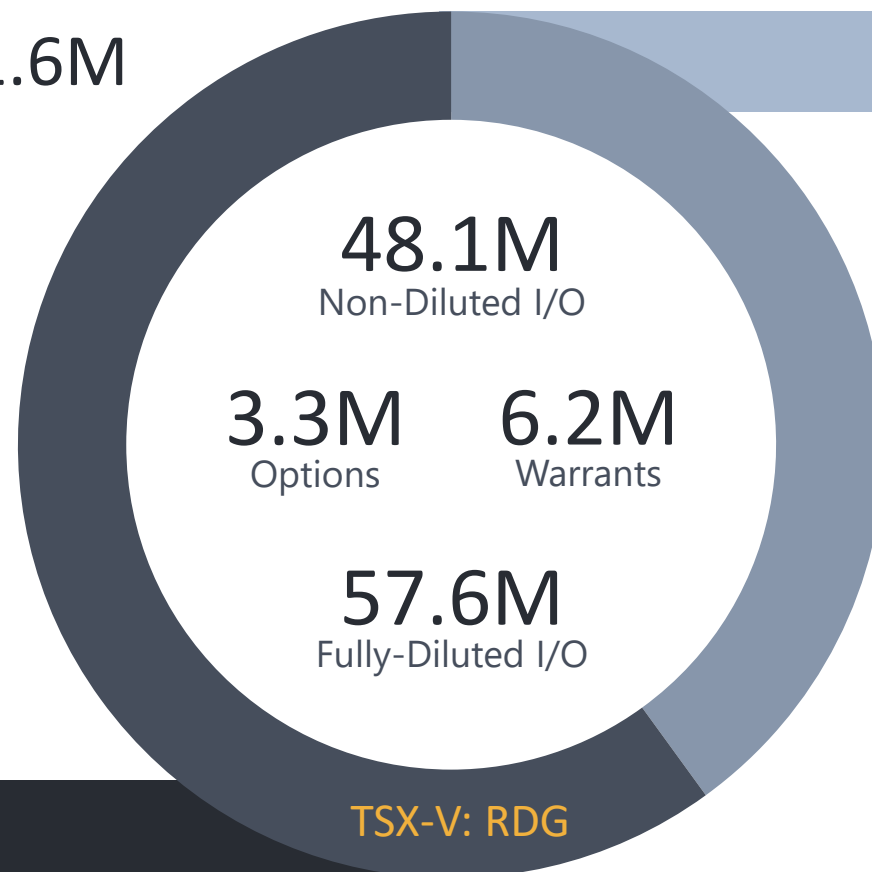
19% Public Companies

- **EMX Royalty**
- **Vior Inc.**
- **Ethos Gold**

12% Institutions

- **Stephens Investment Mgmt.**

52% Retail Investors



IPO - \$5.0M @ \$0.45

(closed 08-12th upsized & heavily oversubscribed)

August 17th - First Trading Day

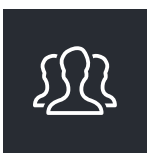
C\$9.7M raised in 2019-2020

About Us

Why Nevada?



World-Class Infrastructure



Skilled Workforce



A Leader In Global Gold Production



Low Geo-Political Risk



Discovery is fundamental to value creation and the latest results from Fourmile confirm the potential for further high-value discoveries in the greater Cortez - Carlin regions which has been a prolific source of gold discovery and production for 150 years, and still holds an untapped wealth of geological endowment.

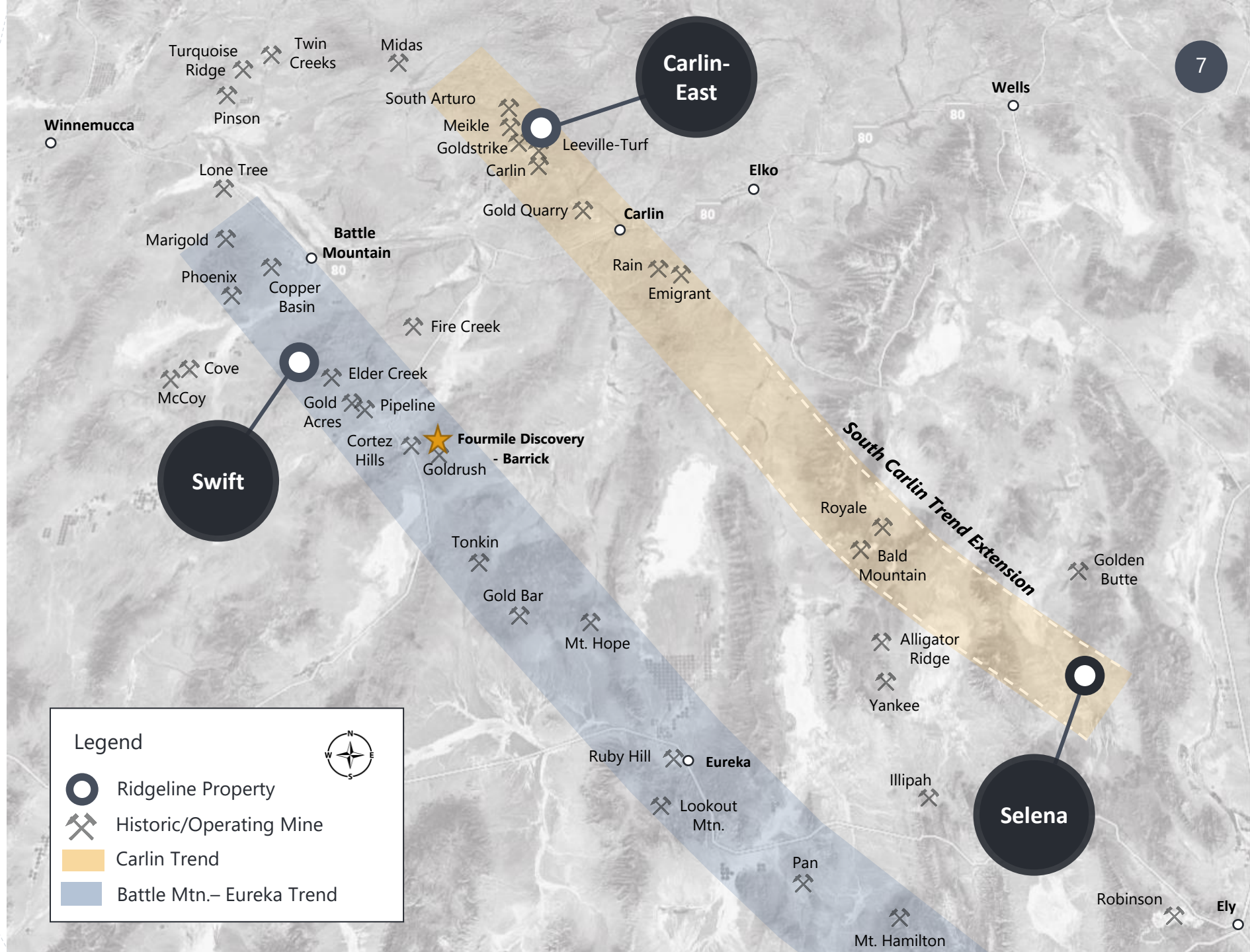
– *Mark Bristow, Barrick President & CEO*
September 17, 2019 – Denver Gold Show

LOCATION IS KEY

3 Projects

116 km² Exploration Portfolio in Nevada

100% ownership of 3 projects on the Carlin and Battle Mtn – Eureka Trends

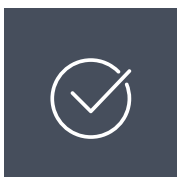
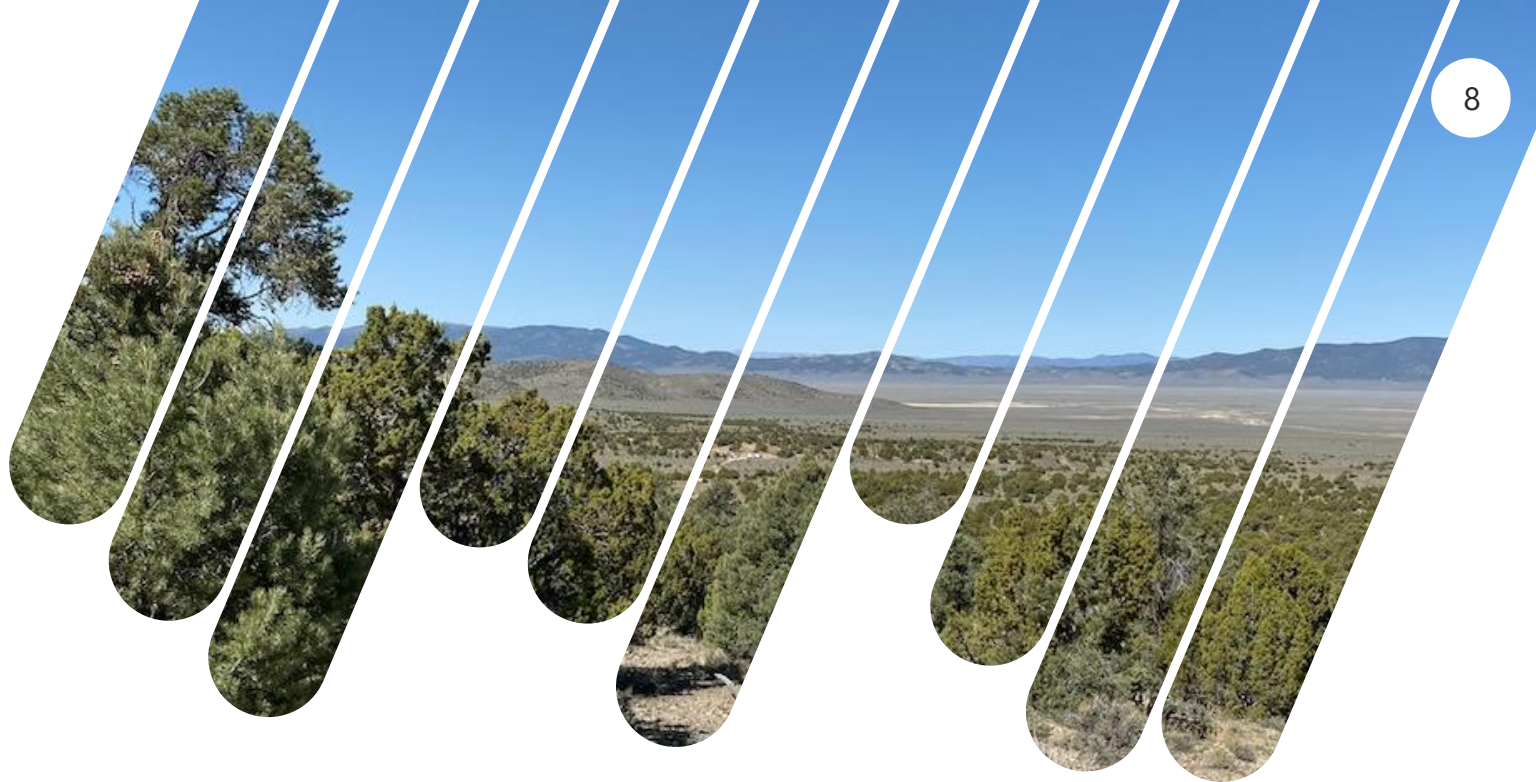


OUR PROJECTS

Selena

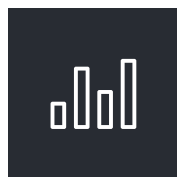
26 km² Land Package

Oxide Open-Pit Au-Ag Target



100% OWNED

100% owned⁽⁵⁾ land package.
Adjacent to historic Golden Butte mine⁽¹⁾ (McEwen Mining) directly "north"



FULLY PERMITTED

Permitted and bonded 5.0 acre BLM Notice of Intent for 22 drill sites



DRILLING IN 2020

1,000m Phase II Drill Program in progress (August 2020)



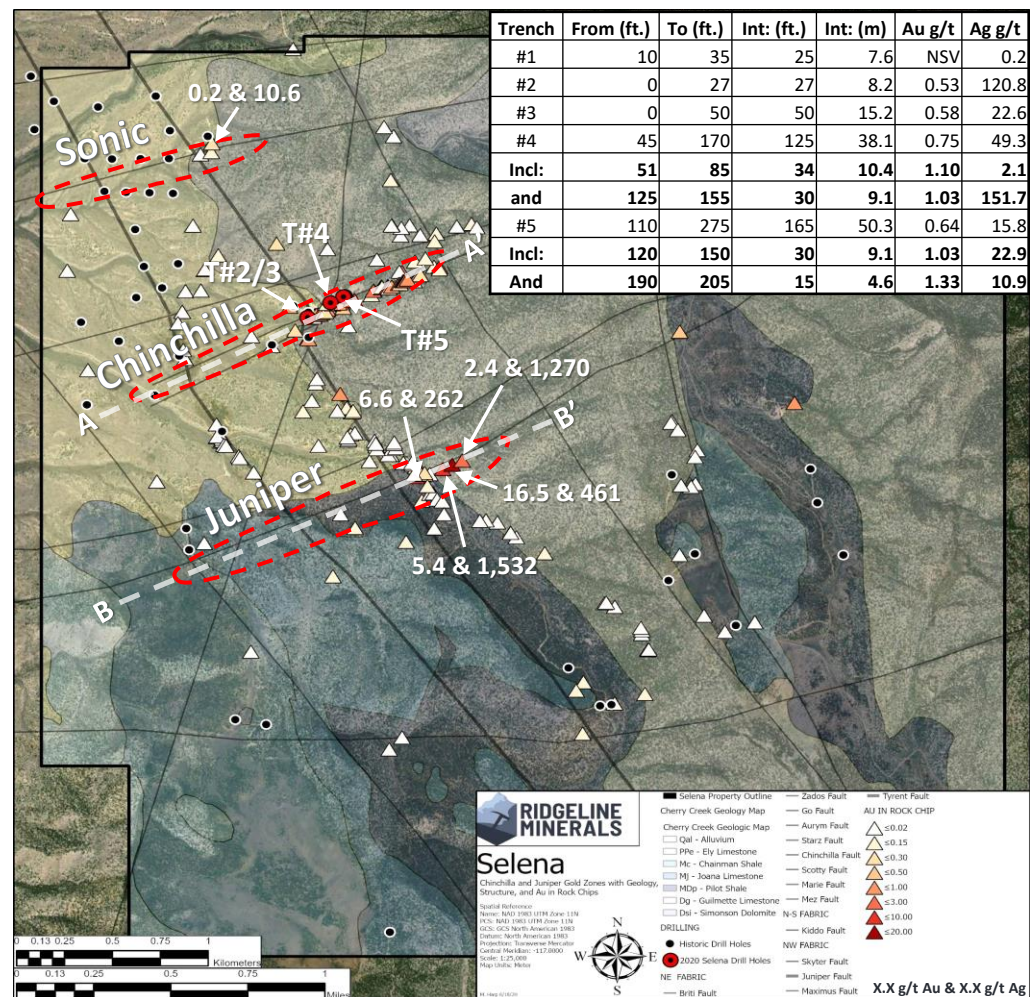
HIGHLY PROSPECTIVE

Chinchilla, Juniper and Sonic Au-Ag targets with combined strike of 3+km

⁽⁵⁾ Ridgeline's option to purchase 100% fully satisfied upon closing of IPO

SELENA

Multiple Targets – Oxide Au-Ag



Au – Gold, Ag – Silver, As – Arsenic, Sb – Antimony



SELENA

Chinchilla – Phase I drilling

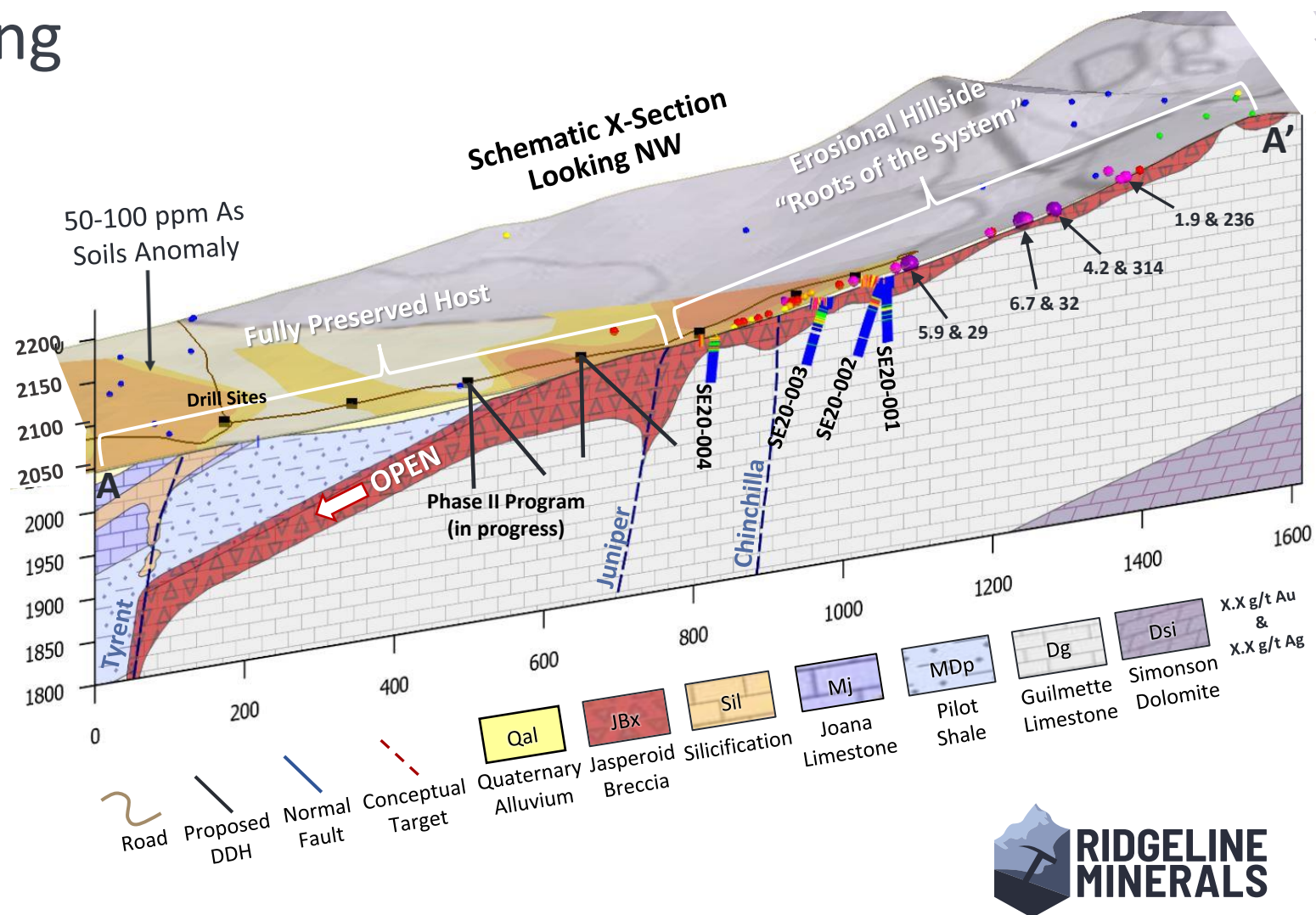
- Phase I program (Q2) completed 4 drill holes (350m) beneath trenches # 2-5
- Drilling hit oxide Au-Ag in 3 of 4 holes
 - **9.1m @ 0.57 g/t Au, 7.03 g/t Ag**

Assay Composite Table

Drillhole	From (ft.)	To (ft.)	Int: (ft.)	Int: (m)	Au g/t	Ag g/t
SE20-001	No Significant Values					
SE20-002	75	105	30	9.1	0.57	7.03
Incl:	75	90	15	4.6	0.86	12.17
SE20-003	80	95	15	4.6	0.33	120.93
SE20-004	0	20	20	6.1	0.28	19.75
and	55	70	15	4.6	0.42	53.7

- Significant shallow oxide discovery potential⁽²⁾
- **1,000m Phase II program underway**

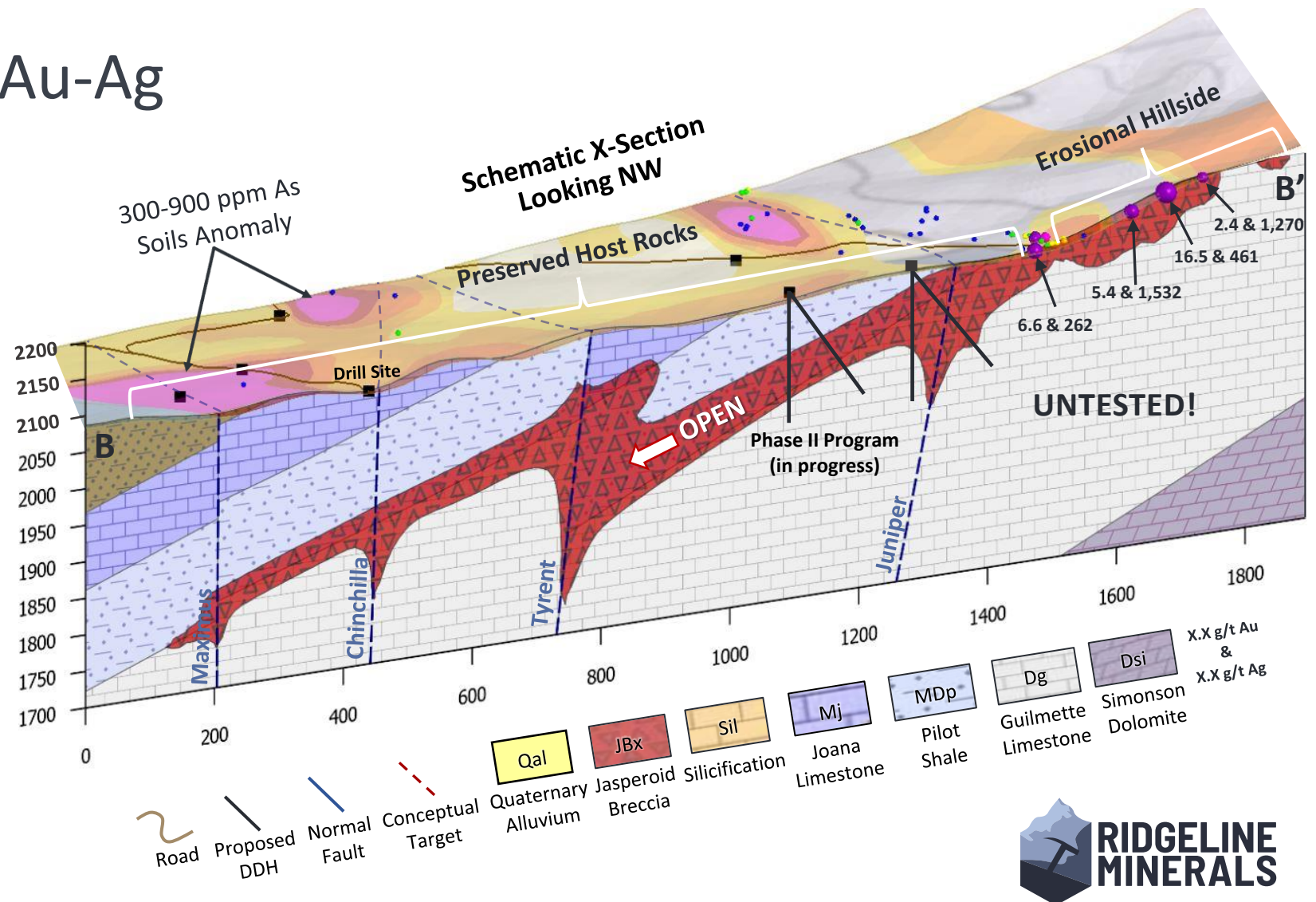
Au – Gold, Ag – Silver, As – Arsenic, Sb – Antimony



SELENA

Juniper – High-grade Au-Ag

- Juniper target located ~1.2 km to the south of Chinchilla within same fault zone (Juniper) & host rocks
- Au-Ag rocks chips⁽⁶⁾ range from below detection to **16.5 g/t Au, 461 g/t Ag**
 - Both soils and rock chips exhibit considerably stronger values than Chinchilla
- Target currently being drill tested in ongoing Phase II program **1.5 + km strike**



(6) Source: 91 rock chip samples taken in the general Juniper target area in 2020 with values ranging from min = 0.001 ppm Au, mean = 0.466 ppm Au, max = 16.5 ppm Au



SELENA

Project Catalysts

2 0 2 0



3D Model Generation



Field Mapping & Prospecting



Notice of Intent Permit (5 Acre)



Chinchilla Trench Program



Gravity Geophysics



Soil Sampling Program



Drilling

Phase I - Chinchilla (350m)



Phase II - Chinchilla & Juniper (1,000m)



I
P
O

T
S
X
-
V

Phase II
drill results



August 17th

COMPLETED

PLANNED

PLANNED

Subject to Financing & Results



OUR PROJECTS

Carlin-East

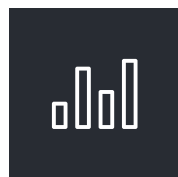
39 km² Land Package

High-Grade Underground Au Target



100% OWNED

100% owned⁽⁵⁾ land package
in the heart of the Carlin Trend



FULLY PERMITTED

Fully permitted and Bonded
5.0 acre BLM Notice of Intent



DRILLING IN 2020

1,000m drill program will test
high priority Crash Zone target



STRATEGIC LAND POSITION

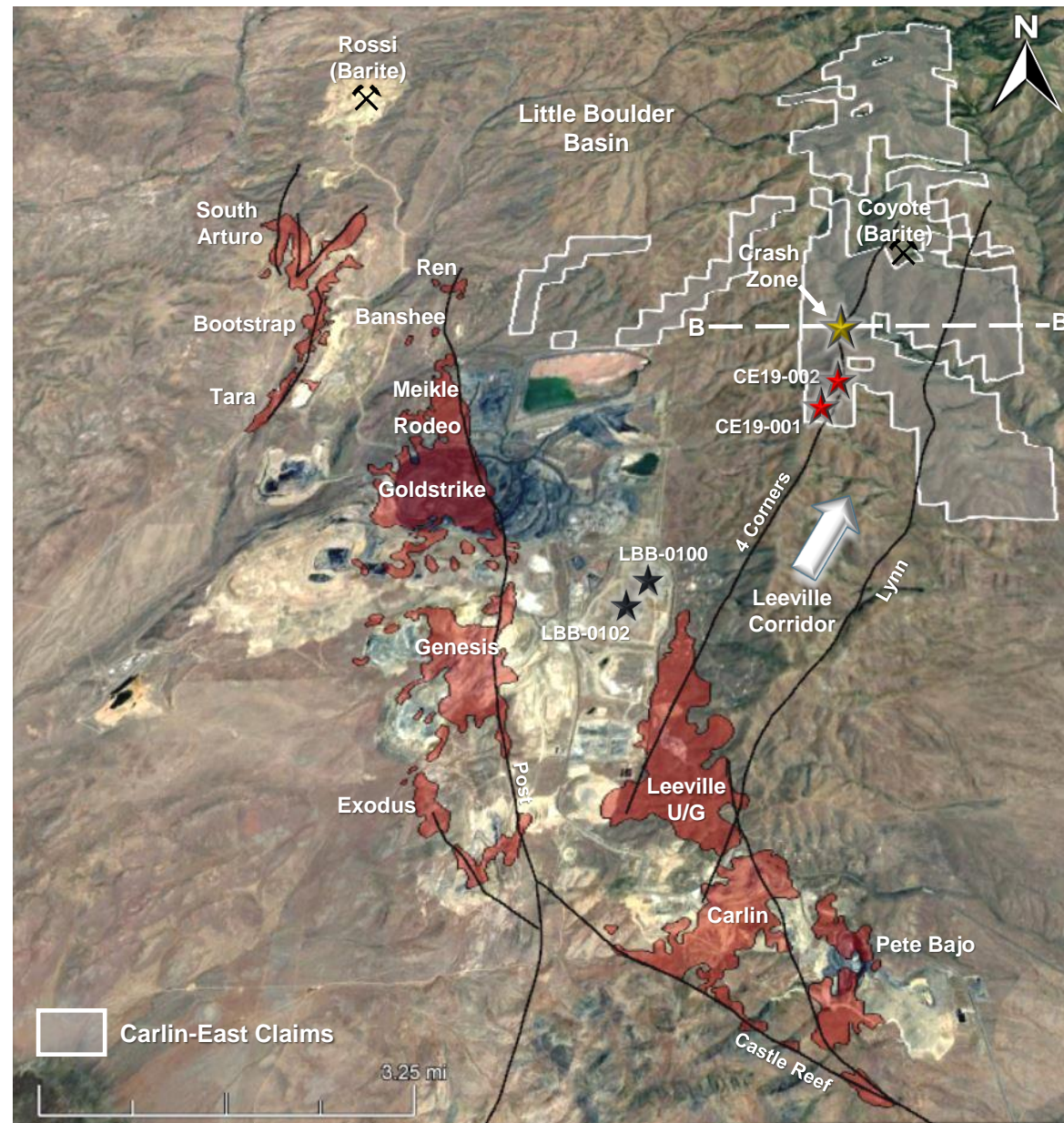
Located on the Carlin Trend on-strike of the
Leeville mine⁽¹⁾ and adjacent to the Goldstrike
Complex

⁽⁵⁾ Ridgeline's option to purchase 100% fully satisfied upon closing of IPO

CARLIN-EAST

Core Land Position

- Located ~4km "north" of and on-strike of the Leeville mine⁽¹⁾ within the historically underexplored Leeville Structural Corridor

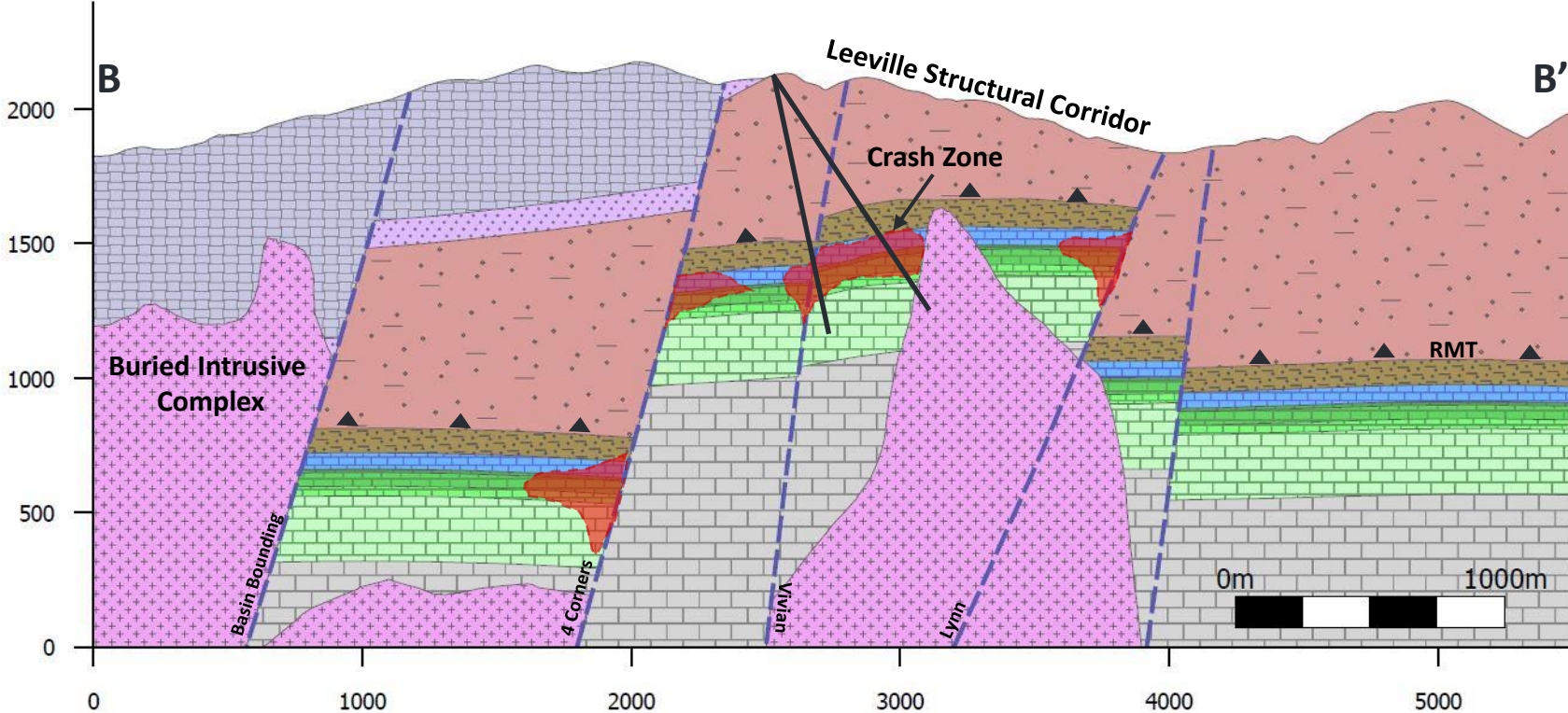


CARLIN-EAST

X-Section B-B'

- 2020 drilling at Crash Zone will target Lower Plate host rocks along the margins of a recently identified buried intrusive complex
 - Leeville, Goldstrike and Genesis Mines⁽¹⁾ all closely associated with intrusive stocks and sills

Schematic X-Section Looking NE



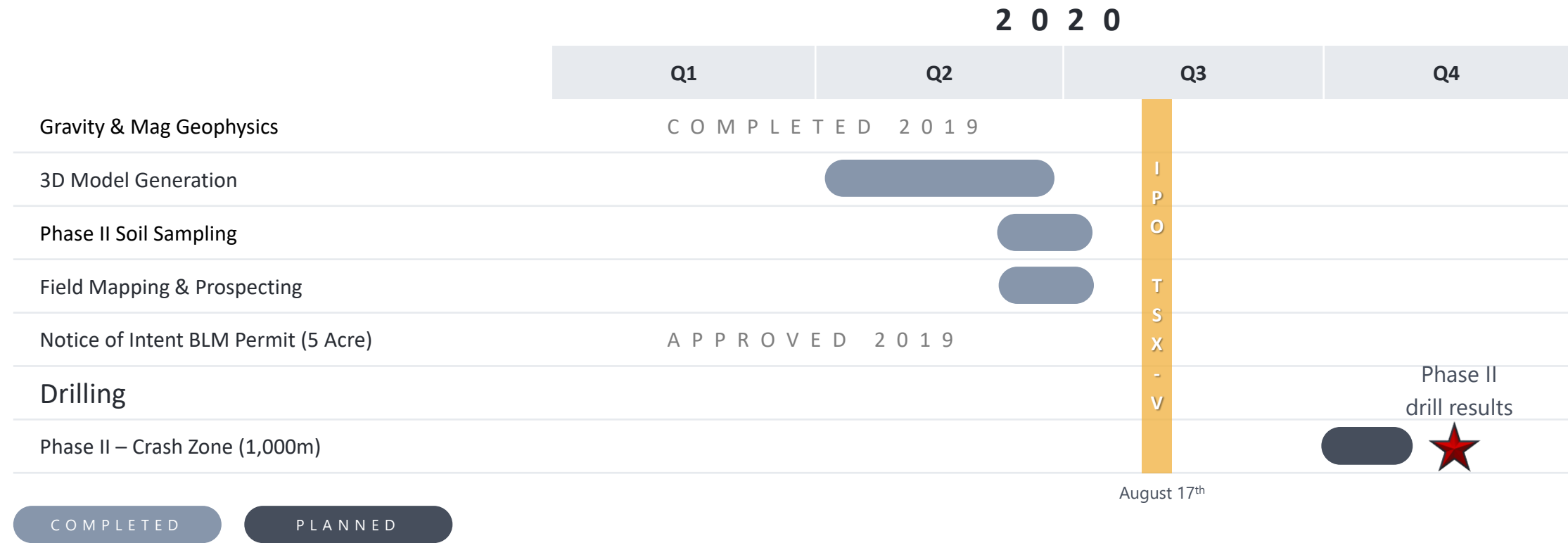
Legend

Dp	Dsc	JTi	Ovsc	Srm2	Srm4	Proposed DDH
Drc	DSe	Ohc	Srm1	Srm3	Target	



CARLIN-EAST

Project Catalysts

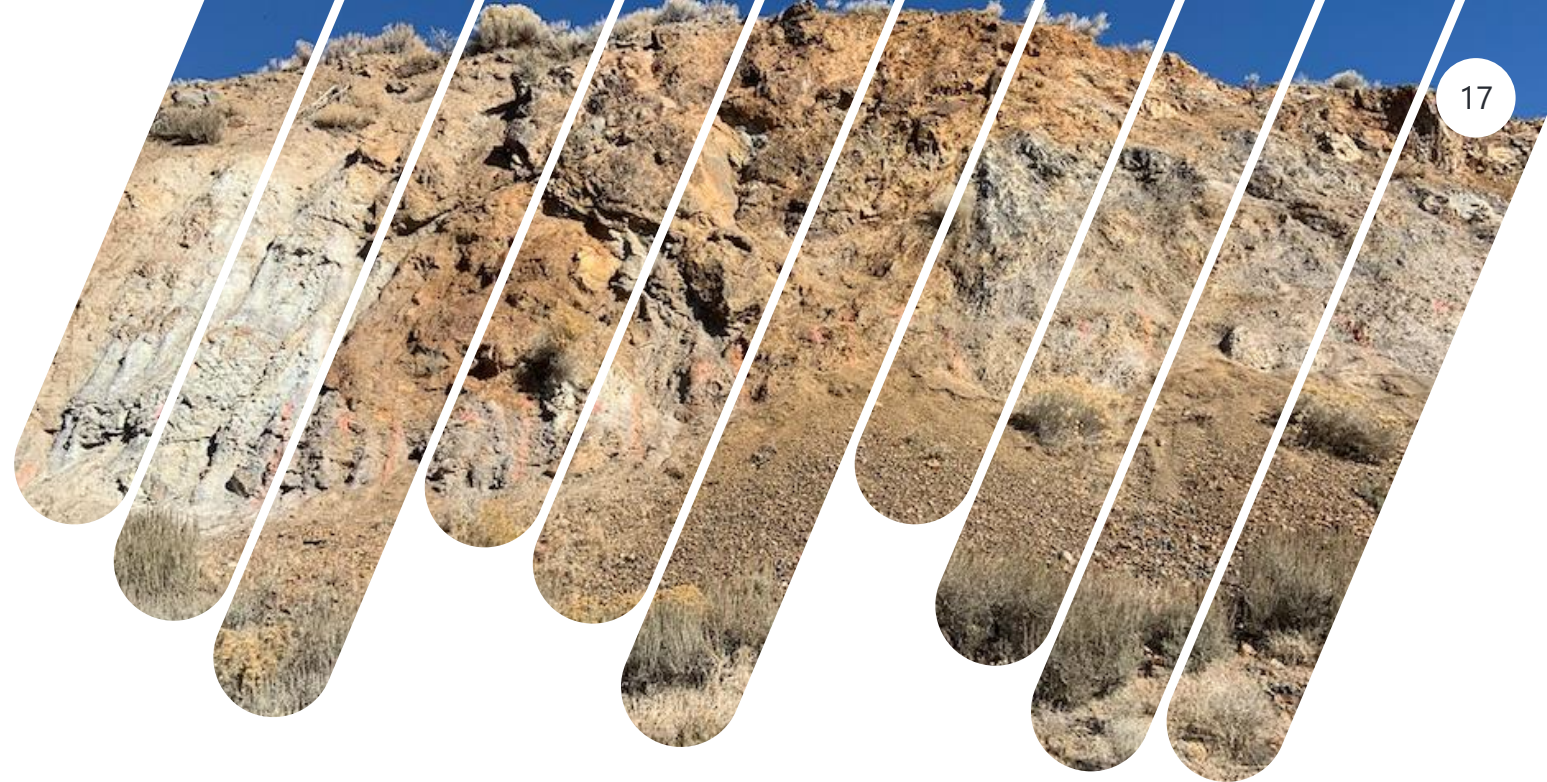


OUR PROJECTS

Swift

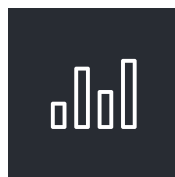
51 km² Land Package

High-Grade Underground Au Target



100% OWNED

100% owned⁽⁵⁾ land positioned in the Cortez district of the Battle Mtn.-Eureka Trend



PERMIT PENDING

5.0 acre Notice of Intent (NOI) permit pending BLM approval



LOCATION

District-scale land package ~10km NW of the Pipeline, Cortez Hills, Goldrush and Fourmile deposits⁽¹⁾



DRILLING IN 2020

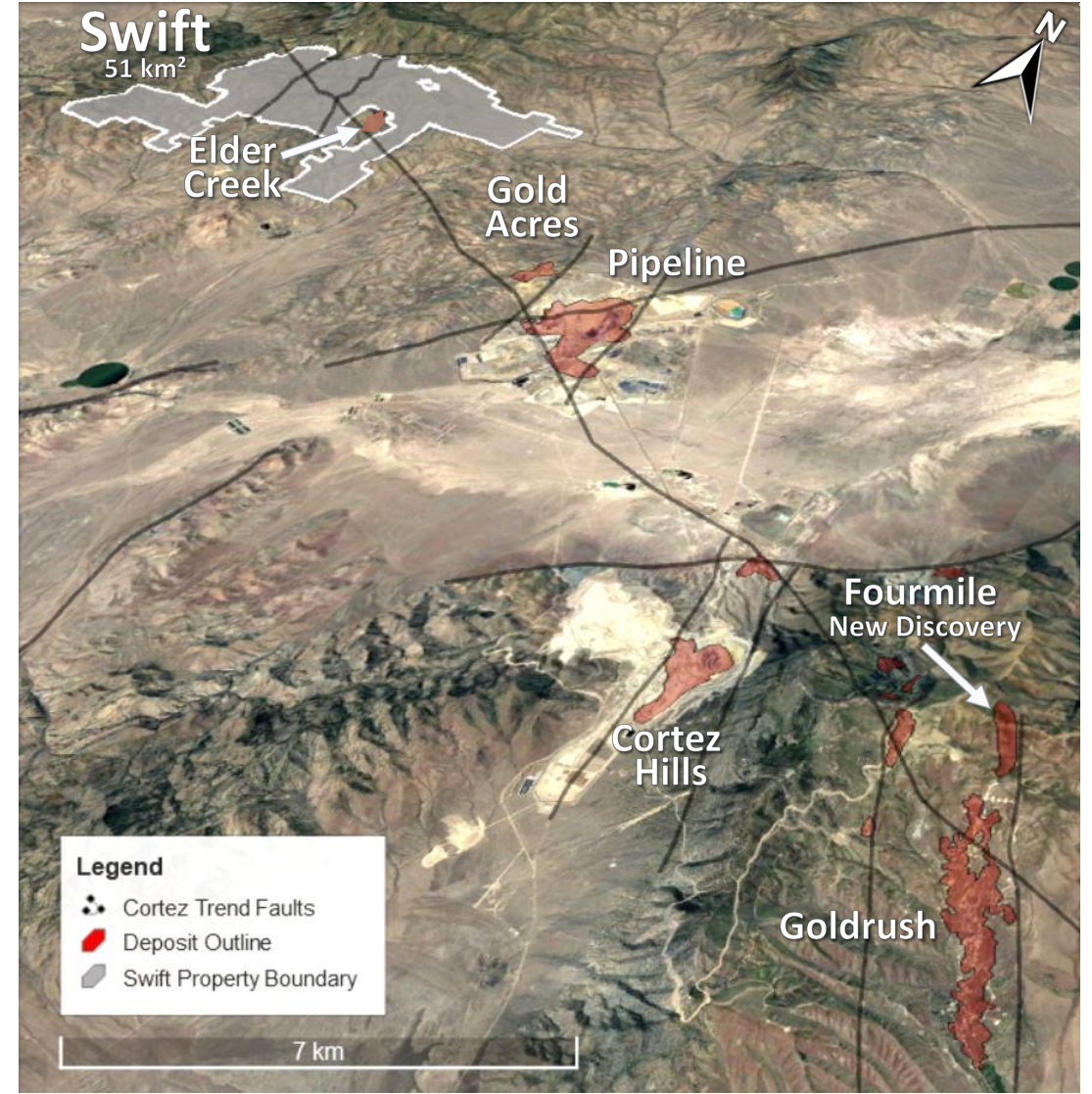
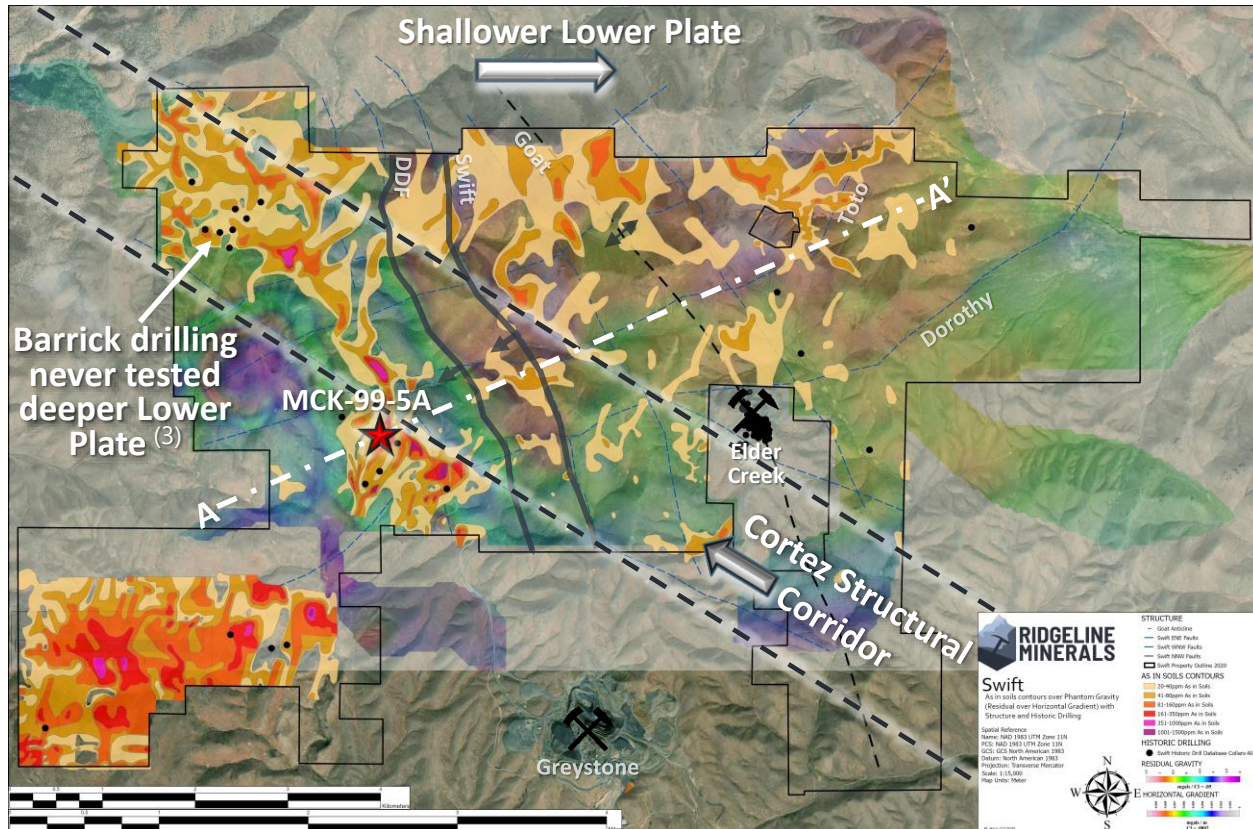
2020 drilling will target high-grade Carlin-type mineralization at multiple targets

⁽⁵⁾ Ridgeline's option to purchase 100% fully satisfied upon closing of IPO

SWIFT

Residual Gravity – As Soils

- Multiple km-scale Au-As-Sb anomalies within completely untested 18 km² Cortez structural Corridor



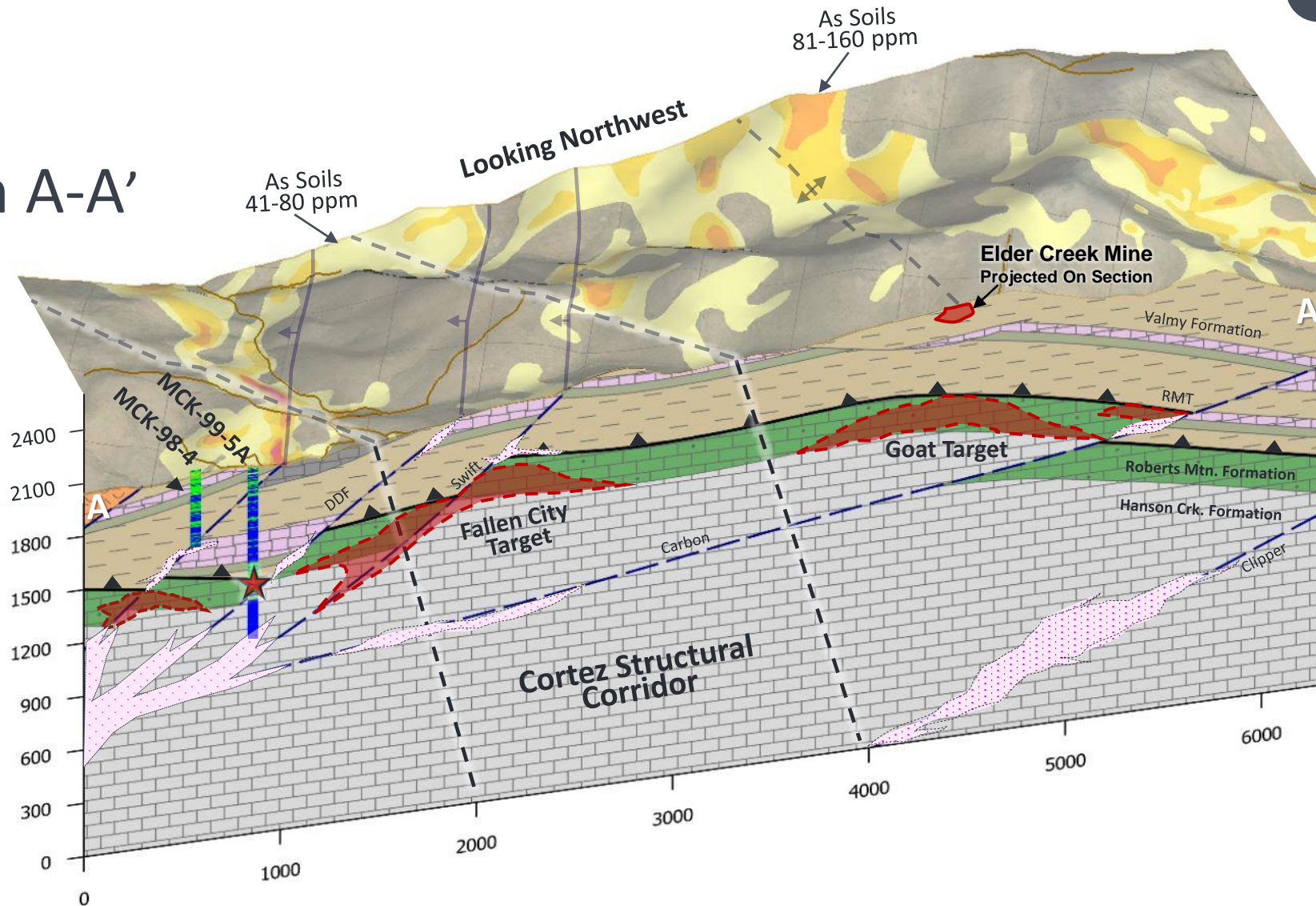
SWIFT

Schematic X-Section A-A'

- Ridgeline team projects the continuation of the Cortez Structural Corridor across the Swift property

★ Historic DDH: MCK-99-5A
16.8m @ 0.72 g/t Au, 0.50 g/t Ag starting at 727m
 confirms a Carlin-Type Au system in favorable Lower Plate rocks (2)

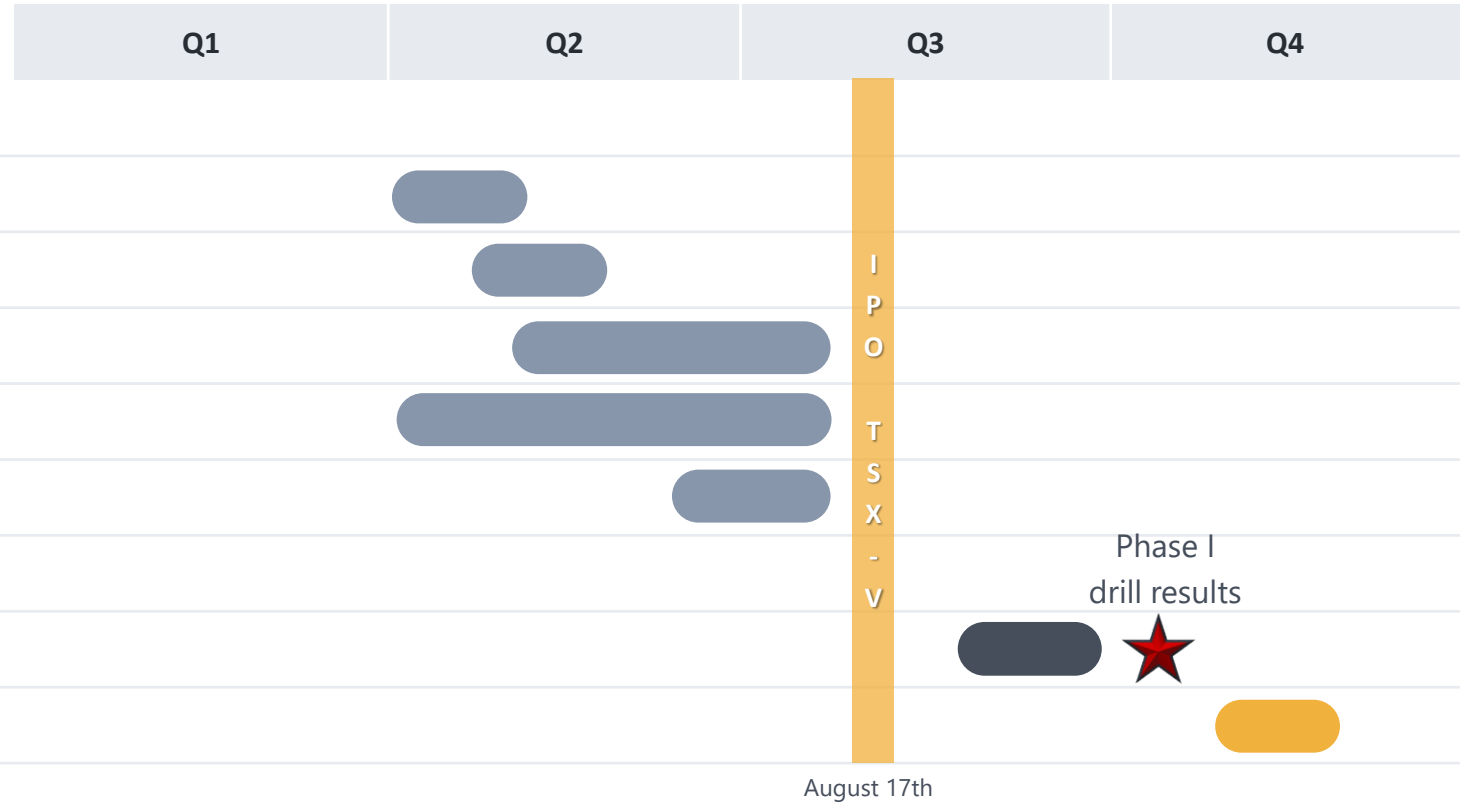
- Fallen City and Goat Targets are untested



SWIFT

Project Catalysts

2 0 2 0



I
P
O
T
S
X
-
V

Phase I
drill results



COMPLETED PLANNED PLANNED

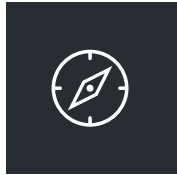
Subject to Financing & Results



ABOUT US

Why Invest in Ridgeline Minerals

Fully-funded to complete exploration activities across all three projects in H2, 2020



LOCATION

Nevada - top ranked mining jurisdiction in the world ⁽⁴⁾



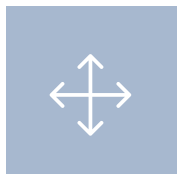
DRILLING EXPERTISE

Industry leading drill services
= greater access = more drilling
= higher potential for discovery



EXPERIENCED GOLD EXPLORERS

Decades of experience finding numerous multi-million ounce gold deposits in Nevada



SIZE

One of the largest land packages (116 km²) in Nevada controlled by a junior exploration company



CATALYST-RICH ACTIVITY

5,750 meter drill program planned for 2020 across all three projects



SHAREHOLDER FRIENDLY STRUCTURE

Management owns 17% and is fully aligned with shareholders

(4) Source: Fraser Institute Annual Survey of Mining Companies 2018. Investment Attractiveness Index weights both policy perception (taxation levels, onerous regulations, quality of infrastructure, etc.) and mineral potential (40% / 60%) of 83 countries and provinces/states.



RIDGELINE MINERALS

TSX-V: RDG



Chad Peters, P.Geo
President, CEO & Director



866-RDG-NVAU (734-6828) – toll free



info@ridgelineminerals.com



ridgelineminerals.com

